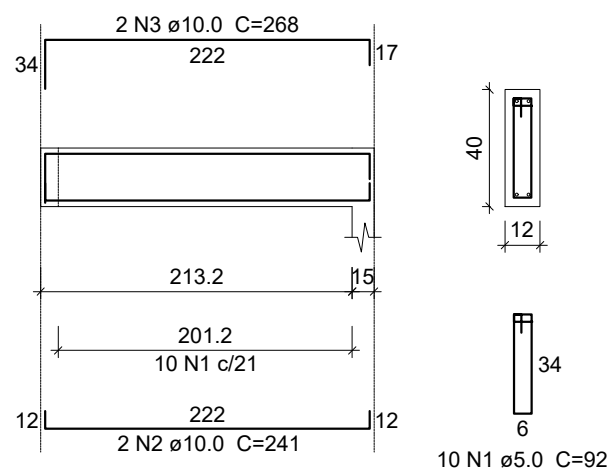
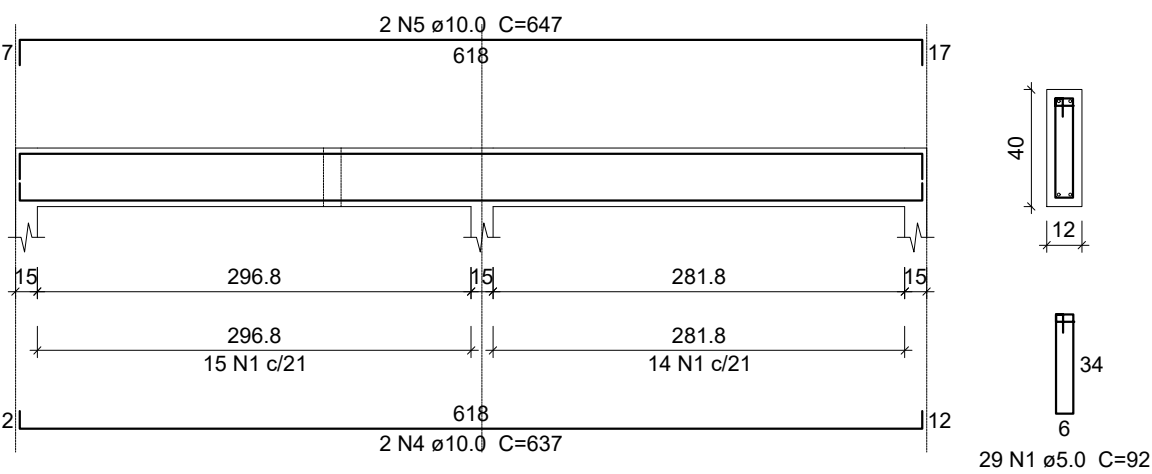


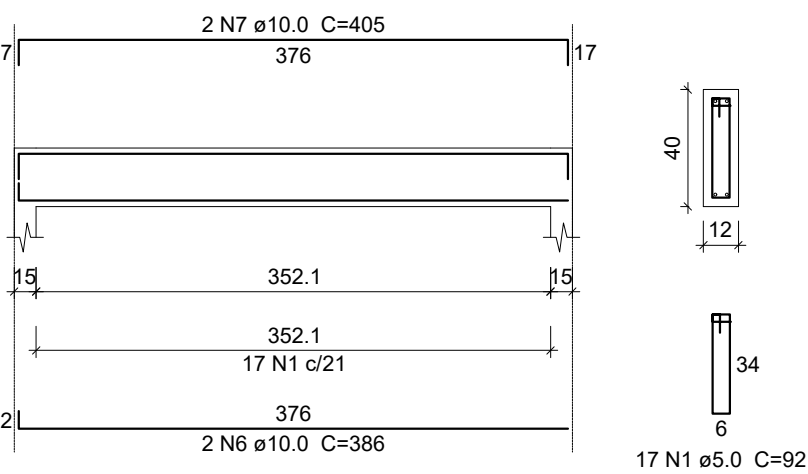
V23



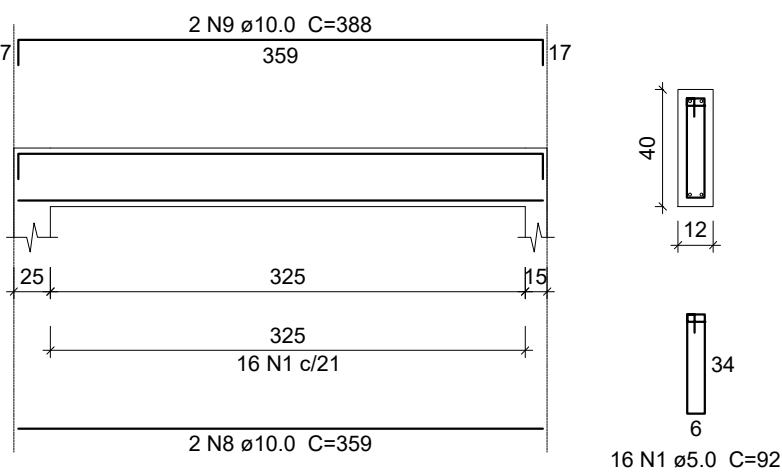
V24



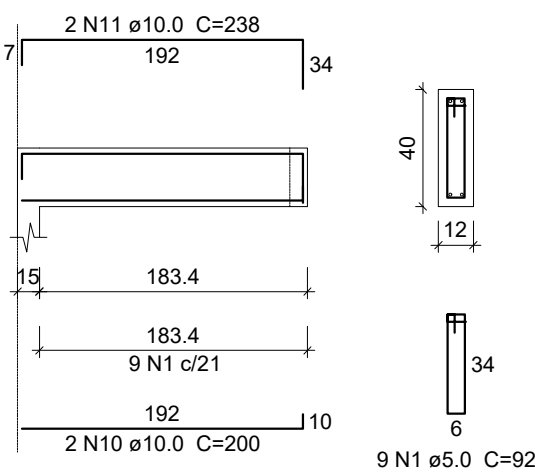
V25



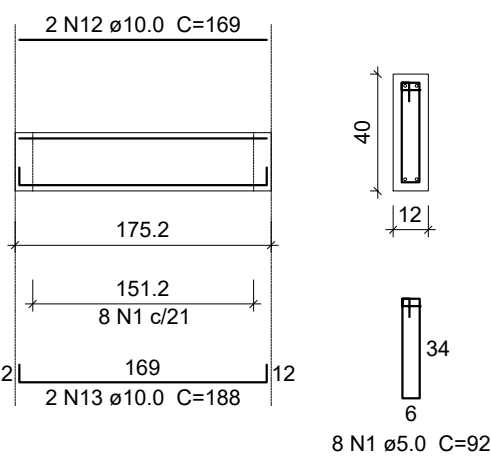
V26



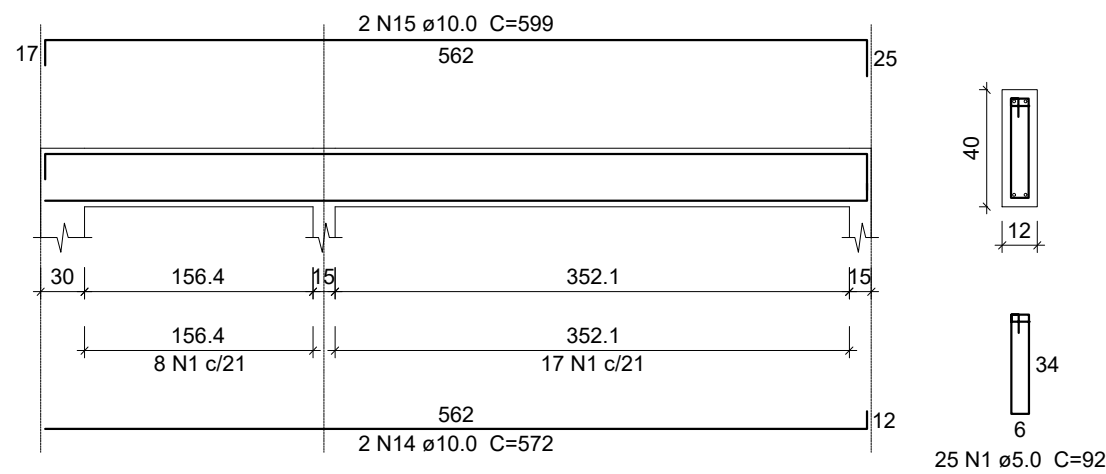
V27



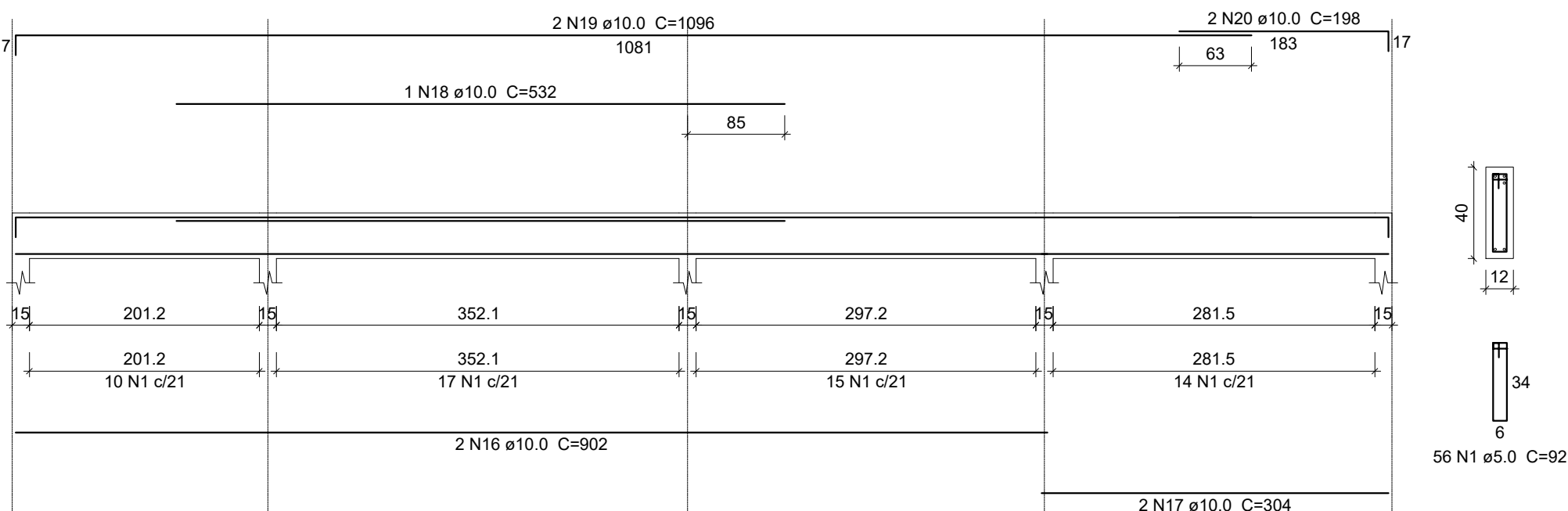
V31



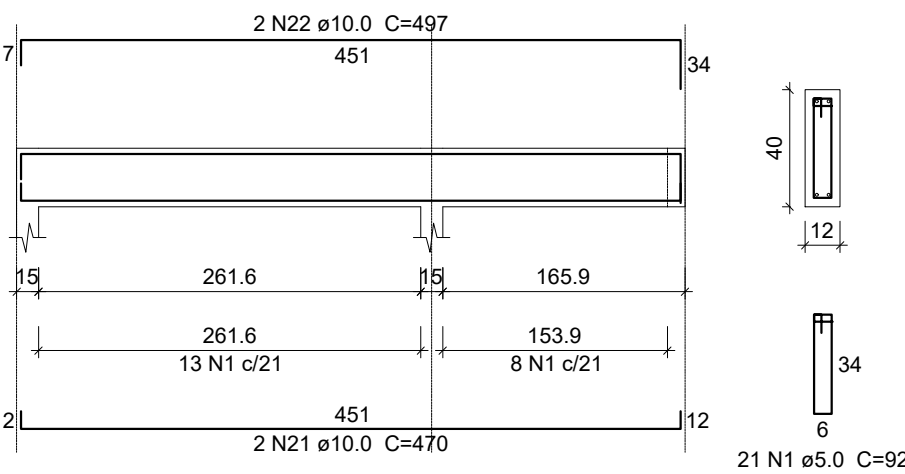
V28



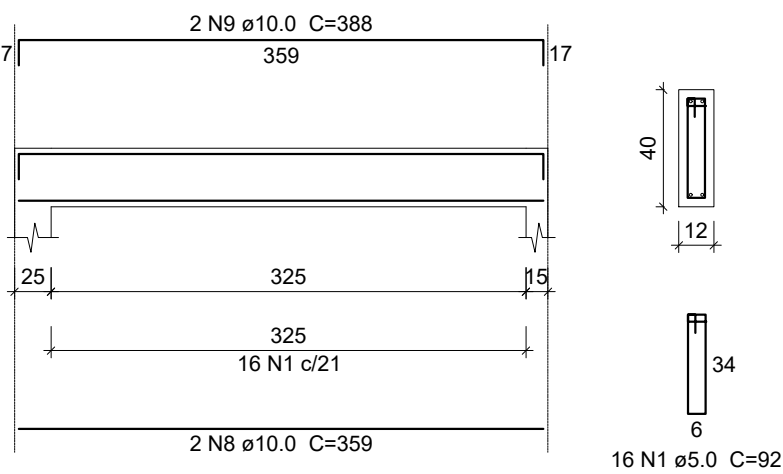
V29



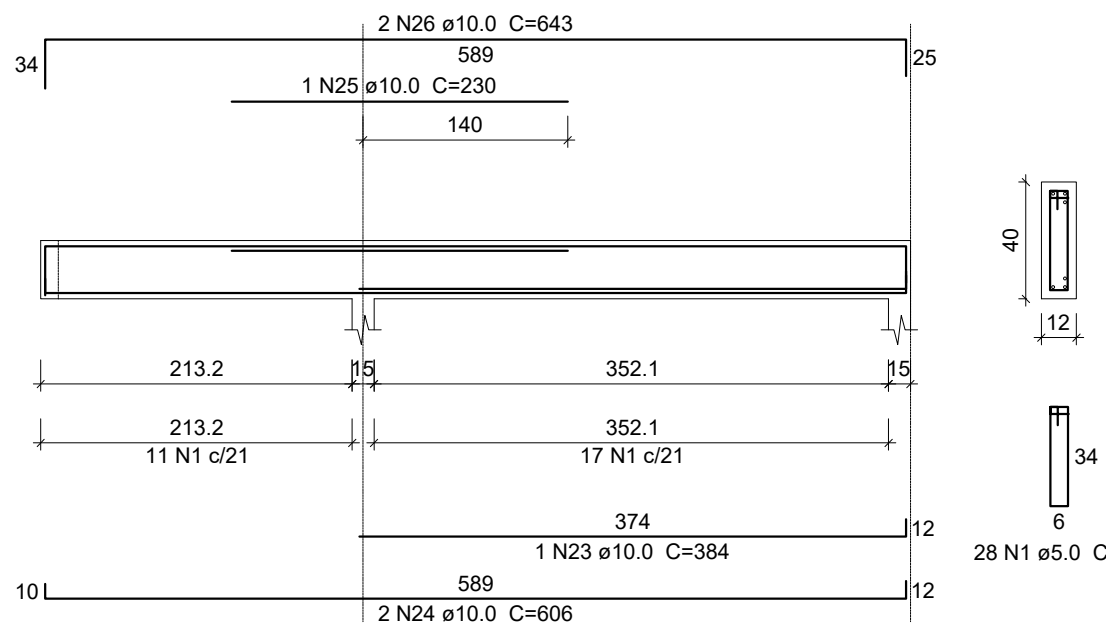
V30



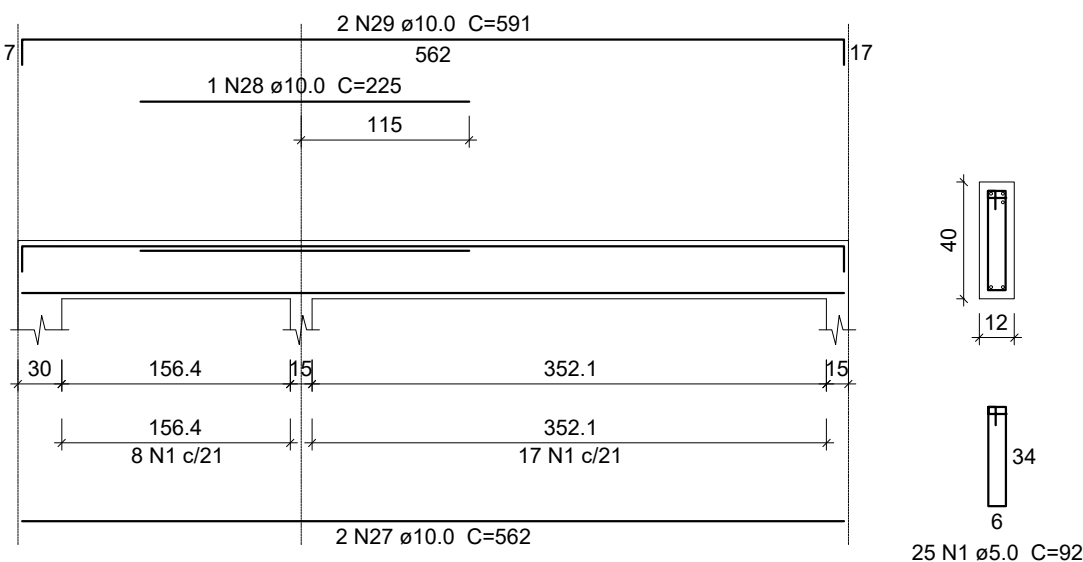
V35



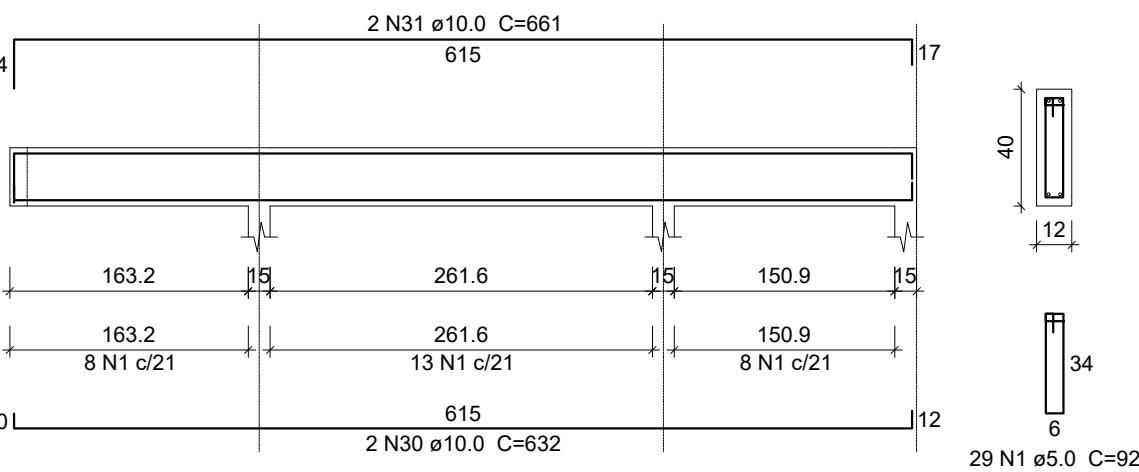
V32



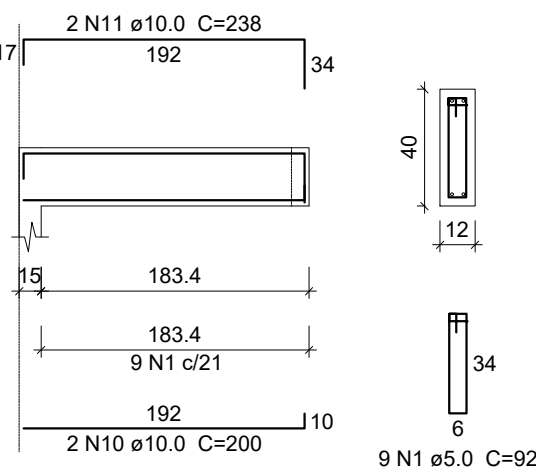
V33



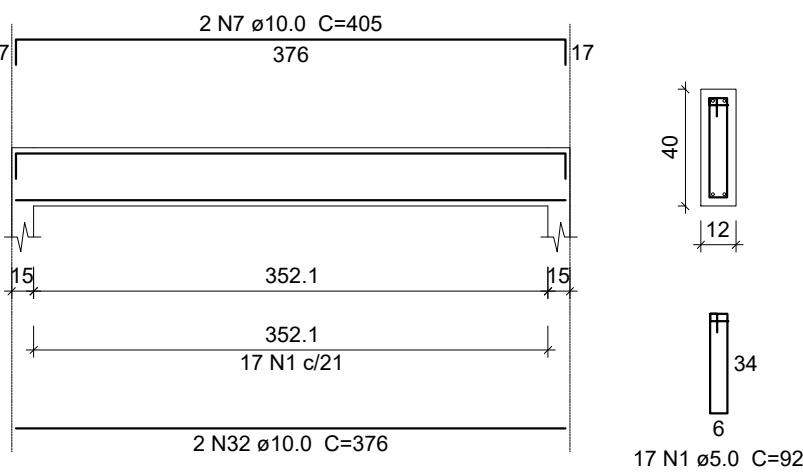
V34



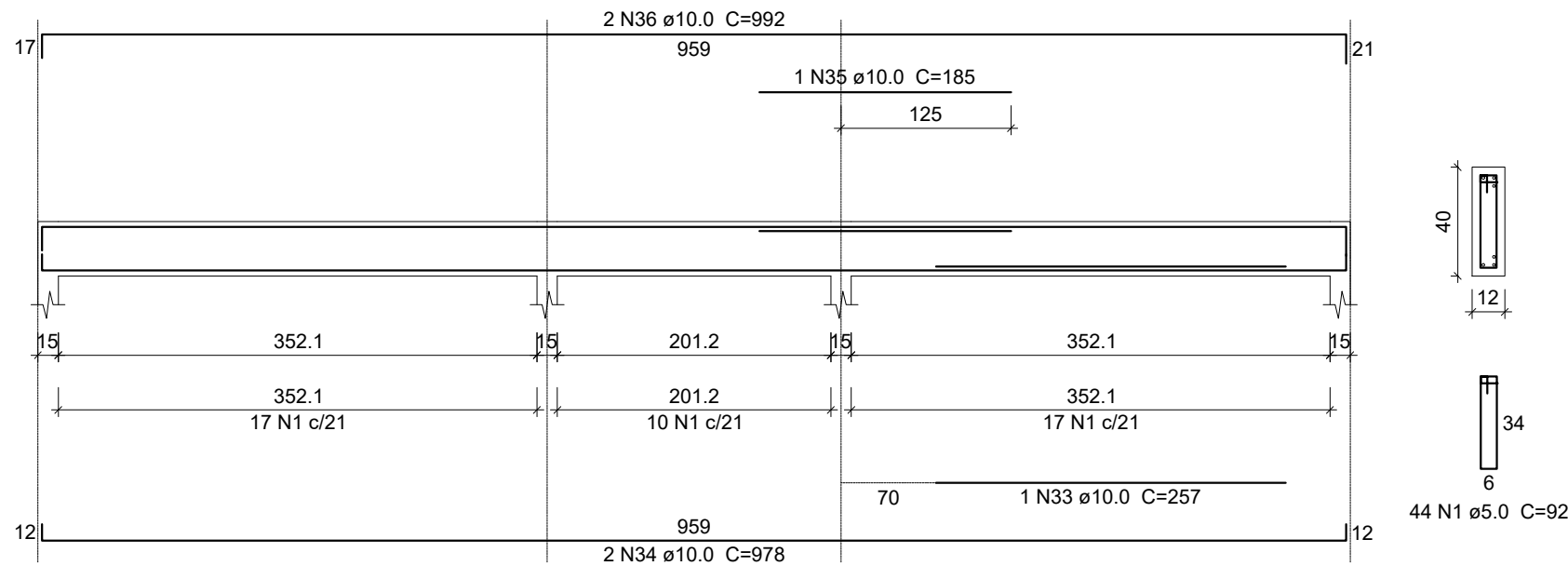
V36



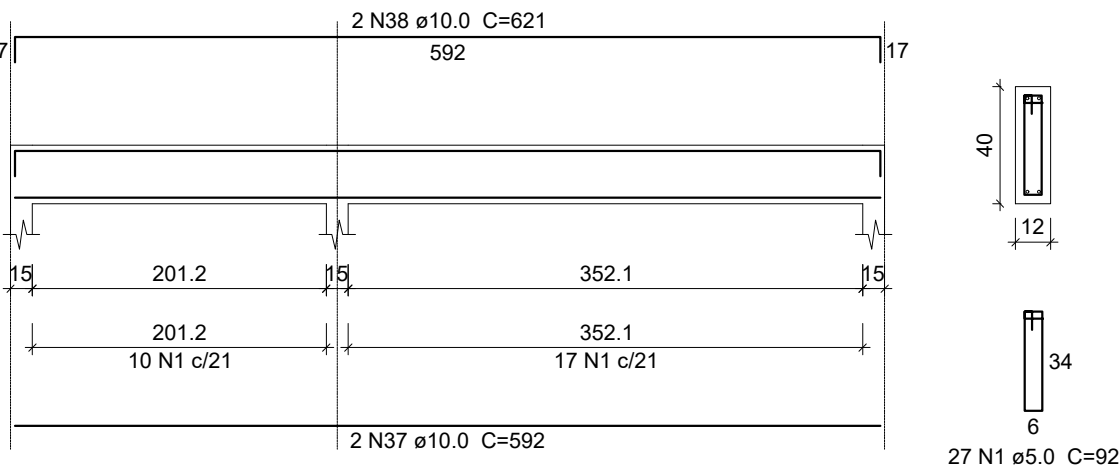
V39



V37



V40



Relação do aço Vigas

AÇO	N	DIAM	Q	UNIT (cm)	C.TOTAL (cm)
V23	1	5.0	386	92	35512
V26	2	10.0	2	241	482
V29	3	10.0	2	268	536
V32	4	10.0	2	637	1274
V35	5	10.0	2	647	1294
V39	6	10.0	2	386	772
	7	10.0	4	405	1620
	8	10.0	4	359	1436
	9	10.0	4	388	1552
	10	10.0	4	200	800
	11	10.0	4	238	952
	12	10.0	2	169	336
	13	10.0	2	188	376
	14	10.0	2	572	1144
	15	10.0	2	599	1198
	16	10.0	2	902	1804
	17	10.0	2	304	608
	18	10.0	1	532	532
	19	10.0	2	1096	2192
	20	10.0	2	198	396
	21	10.0	2	470	940
	22	10.0	2	497	994
	23	10.0	1	384	384
	24	10.0	2	606	1212
	25	10.0	1	230	230
	26	10.0	2	643	1286
	27	10.0	2	562	1124
	28	10.0	1	225	225
	29	10.0	2	591	1182
	30	10.0	2	632	1264
	31	10.0	2	661	1322
	32	10.0	2	376	752
	33	10.0	1	257	257
	34	10.0	2	978	1956
	35	10.0	1	185	185
	36	10.0	2	992	1984
	37	10.0	2	592	1184
	38	10.0	2	621	1242

Resumo do aço Vigas

AÇO	DIAM	C.TOTAL (m)	PESO + 10 % (kg)
CA50	10.0	370.3	251.1
CA60	5.0	355.2	60.2
PESO TOTAL			
CA50	251.1		
CA60	60.2		

Vol. de concreto total (C-25) = 4.08 m³  
Área de forma total = 78.19 m²

PREFEITURA DE SÃO JOSÉ  
DO VALE DO RIO PRETO - RJ

ECONSTRUT CONSTRUÇÕES EIRELI.

Estrada Silveira da Motta, Parada Morelli  
S. J. Vale do Rio Preto - RJ  
CEP: 25780-000

Obra: UNIDADE BÁSICA DE SAÚDE - BARRINHA

Projeto: PROJETO ESTRUTURAL

Disciplina: DETALHES VIGAMENTO FUNDAÇÃO - PARTE 02

Escala: INDICADA  
Data: JAN/2023

Escritório Responsável: ABBM BRAGA - COMÉRCIO E SERVIÇOS LTDA

Responsável Técnico: BRUNO TELES NEVES- CREA 2015105127

Prancha: 04/08

Fiscalização e Supervisão: